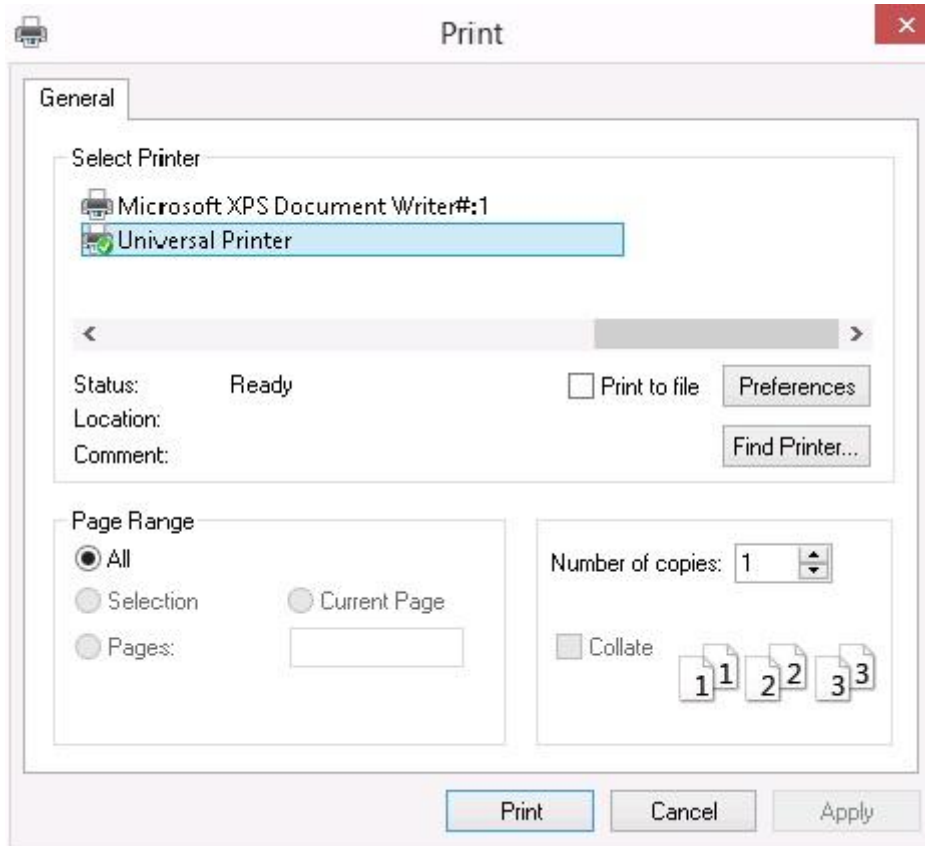
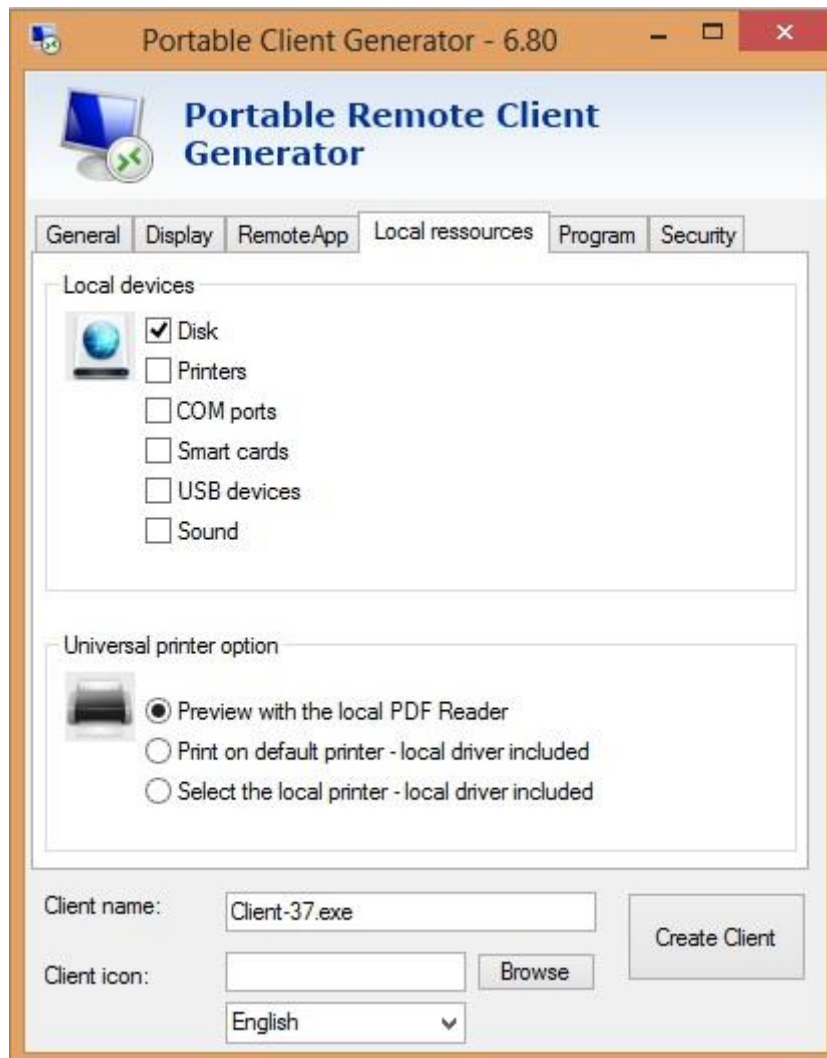


## Advanced printing option: Universal Printer

The ServerLink Universal Printer offers you a great ability: to print documents from any PCs and mobile devices. When selecting this printer, the document to print is automatically converted into a PDF format file. This PDF file is automatically pushed to the local Acrobat Reader of the user's workstation.



You can choose from 3 printing options:



- **Acrobat Reader preview:** the document will be pushed and the local Acrobat Reader will open with the generated PDF file. The user can print it, or save a copy on his local disk drive
- **Print on the user default printer:** the document will be automatically pushed to the default user's printer (the local printing driver is included into the ServerLink connection client).
- **Select a local printer:** The user can select one of his local printers (the local printing driver is included into the ServerLink connection client).

The Seamless client is compatible with any PC with XP, 2003, Vista, Windows 7, Windows 8, Windows 2008 Server and Windows 2012 Server. **Windows 95/98, NT and 2000 are not supported.**

The RDP and USB are compatible with any Windows platform.