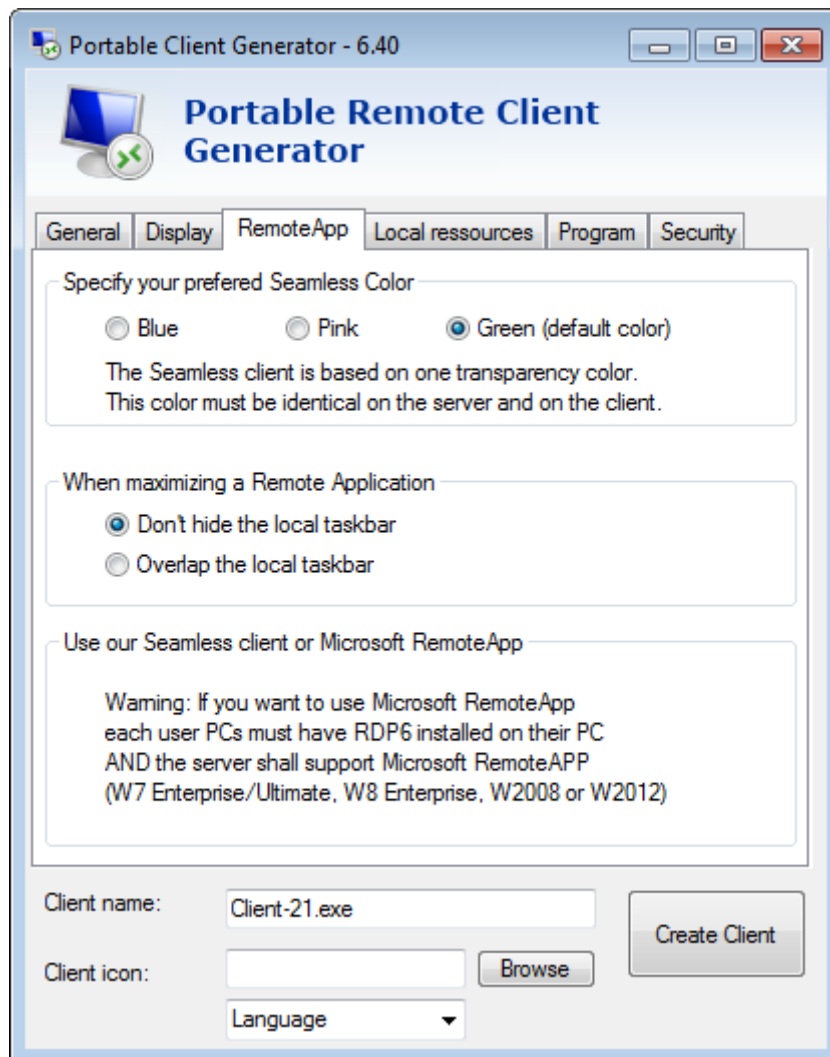
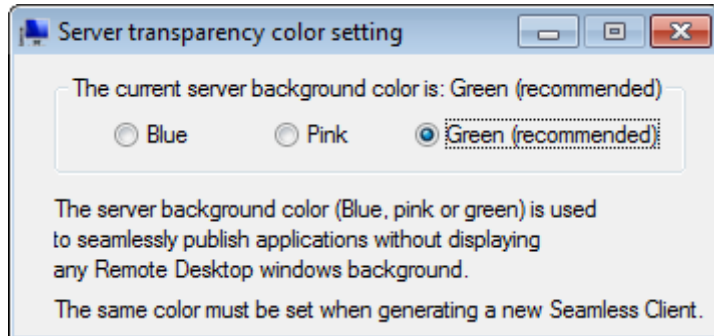


## Seamless Connection Client

When connecting remotely, you can access your applications by selecting the seamless mode as if they were installed locally on your computer. A transparency color can be set manually to insure your application will appear perfectly (green, blue or pink).



The Seamless Client is based on one transparency color selected by the Administrator. As the Remote Desktop background color is painted with the selected transparent color, the Microsoft Remote Desktop is not displayed anymore and the user will just see his published applications.

*Warning:* Installation default is green and should work fine with most applications. We offer you the choice between 3 transparency colors: Pink, Green and Blue. *Warning:* Of course, the server and the connection clients must use the same color.