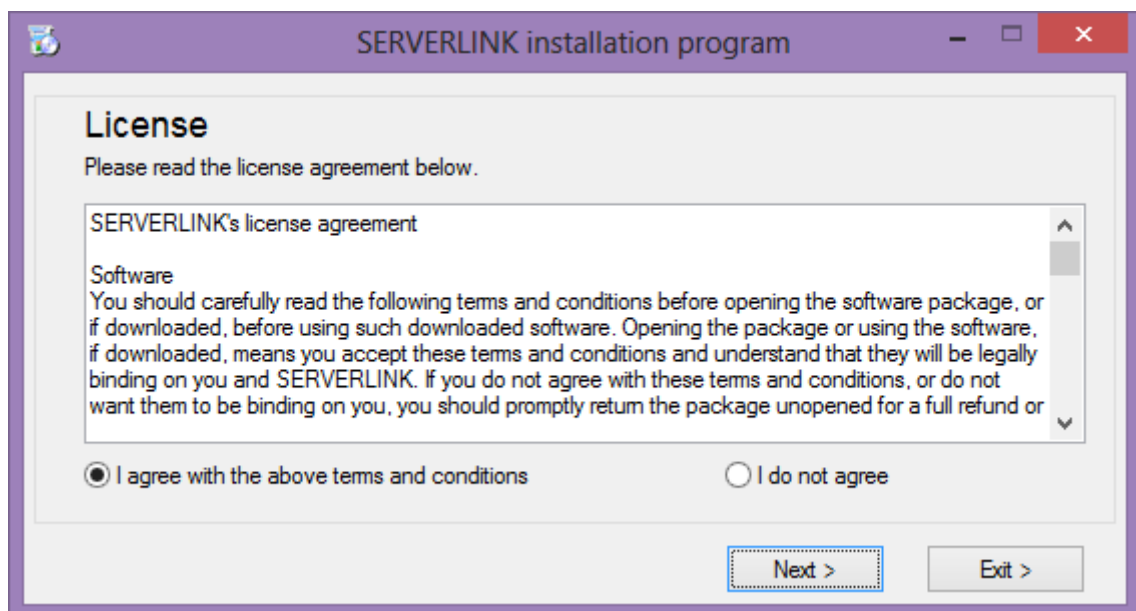
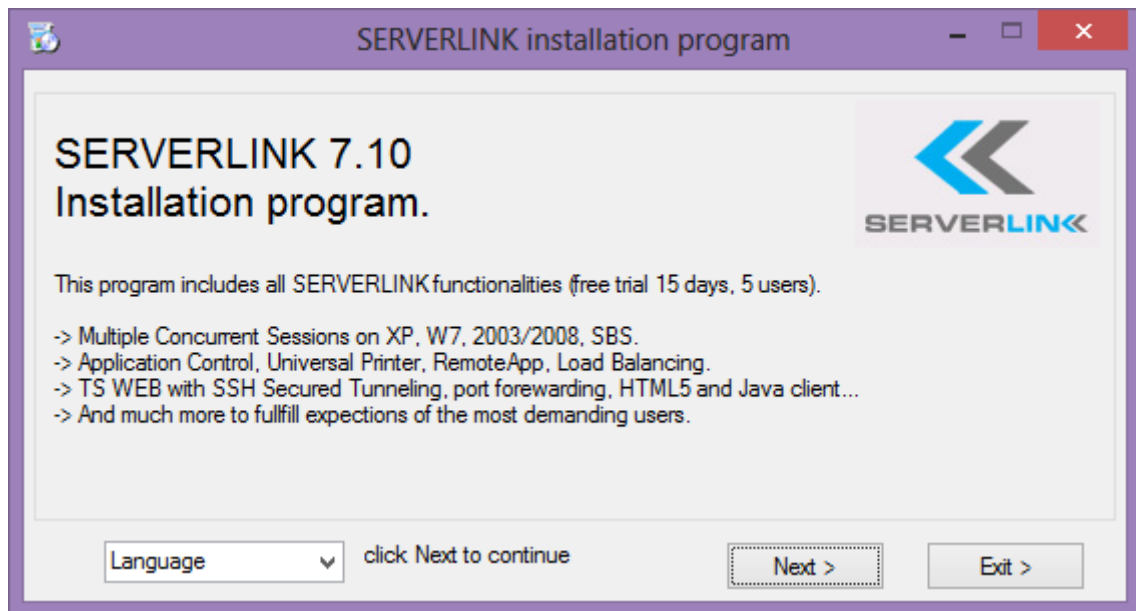


ServerLink Installation

Run ServerLink Setup program and then **follow the installation steps**.



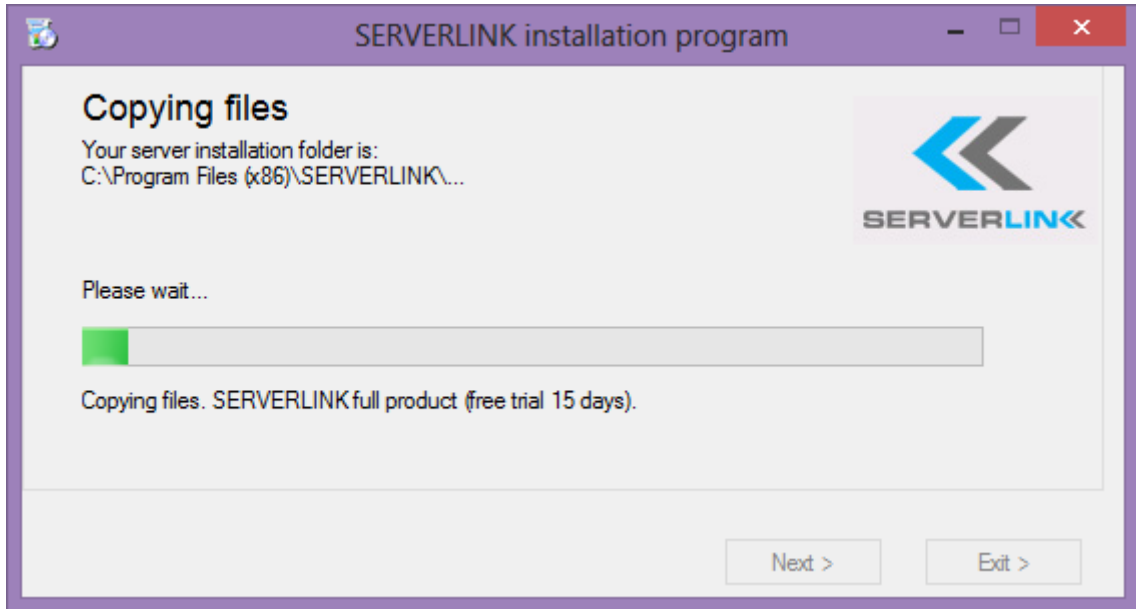
Click on "I agree to the license".

A message then appears to ask you to confirm the ServerLink files creation on C:

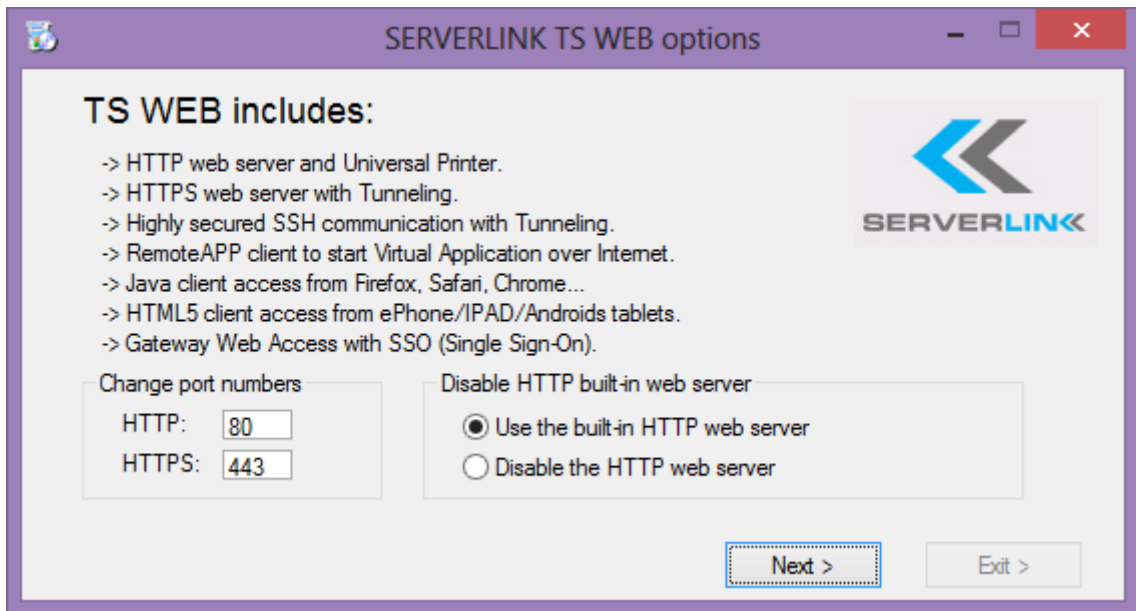
The installation path is mandatory:

`%ProgramFiles%\ServerLink`

The progress bar appears and allows you to follow the progress of process.



Once this first file copy installation step ended, click Next to start the next step.



We recommend you to accept our ServerLink default installation settings. According to our experience, most of the production issues are due to Windows security features. A progress bar is displayed to point out the installation progress of the universal printer ServerLink.

Once the installation terminated, a window informs you about it.

To use ServerLink, you must reboot your system.

The trial periods delivers a full product for 15 days and 5 concurrent users.