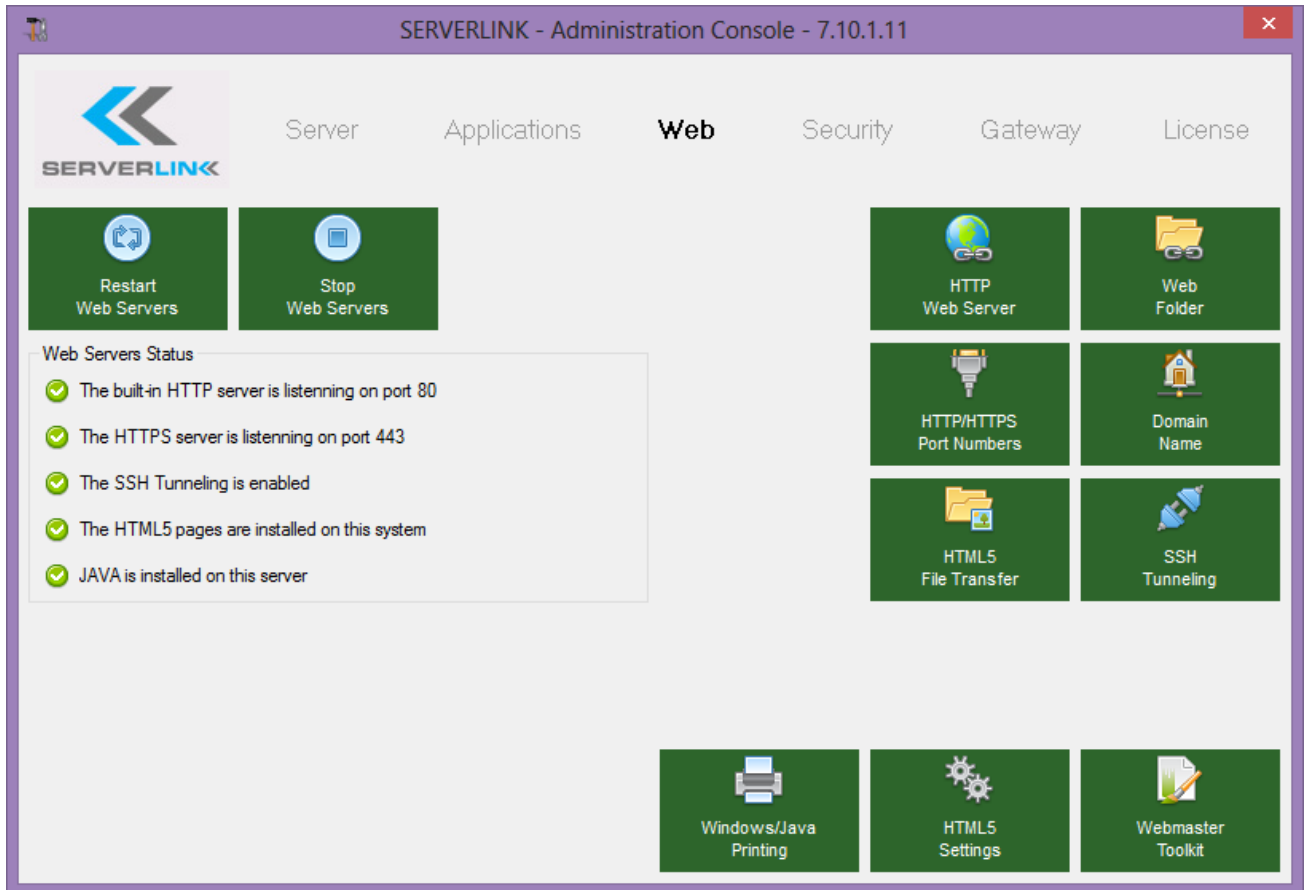


## Web Folder

### Web Server Management Console - Web Folder tile

A Management Console is available in the Administrator Tool.

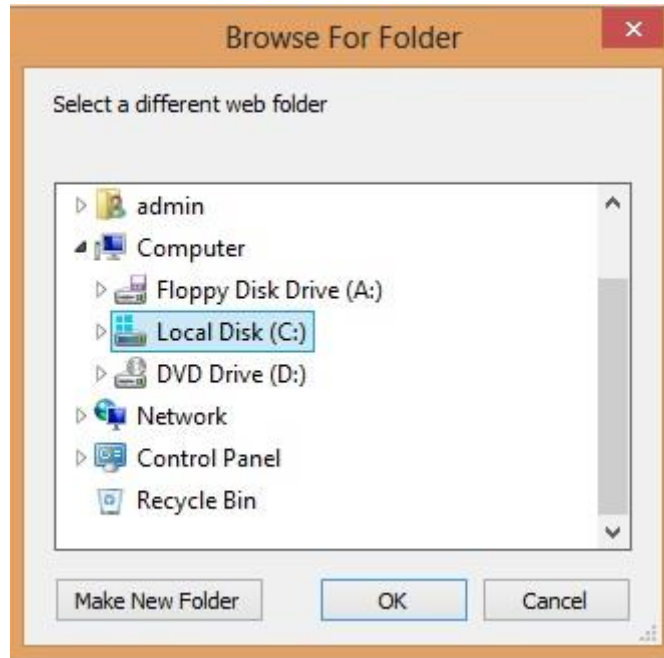
This Management Console enables you to configure ServerLink built-in Web Server, including the Web Folder in its own tile:



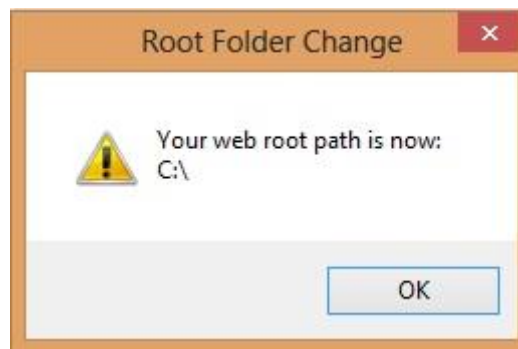
### Using a different HTTP Web Server

If you choose to use another web server than the default one, we recommend you to install the other web server first. Then please click on the Web folder tile.

You can now change the default path to the new web server directory by clicking on the "Select a new Web Server root path" button. The following dialog box will open so you can point to the new web server directory:



Once you have picked the new directory please click the "OK" button to continue. The following message will be displayed showing the new path:



Please click the "OK" button to continue. The "Change the Web Server root path" will now display the same path as showed above :



**Note**

There are two different cases where you will want to change the Web Server root path:

- You will continue to use ServerLink built-in web server, but you want to locate the Web Server root path elsewhere (on an E:\ disk for instance).
- You want to use IIS or Apache - in this case, the Web Server root path will probably be "C:\inetpub\www" or "C:\Program Files (x86)\Apache Group\Apache2\htdocs".

In both cases, when you will use this Web Folder option, ServerLink will copy for you all needed files/folders into the new targeted Web Server root path.