

ServerLink : Get started

Step 1 : Installation.

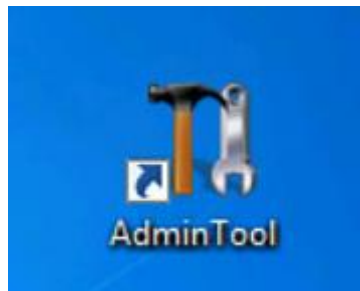
Installing ServerLink is an easy process. Just download it from our web site, run the Setup-ServerLink.exe program and wait until the program asks you to reboot. We recommend you to install Java prior to start the setup program. Java is mandatory to benefit from our great Web Access technology.

Files are decompressed and copied into :

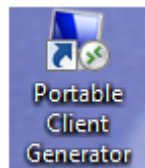
- C:\Program Files\SERVERLINK folder (32 bits systems)
- C:\Program Files(x86)\ SERVERLINK folder (64 bits system).

The trial version is a full Corporate Edition ServerLink system and enables up to 5 concurrent users for a period of 15 days.

After reboot you will see 2 new icons on your Desktop:



The AdminTool is what you need to use ServerLink.



The Portable Client Generator will create a ServerLink connection client for your users.

Pre-requisites:

On Server side:

Windows XP Pro, Vista, Windows 7, W8.0, W8.1, SBS, W2003, W2008 and W2012 with at least 2GB of memory. The operating system must be on the C drive. On Windows Server Environment (2003,2008,2012) please make sure that the TSE/RDS role and the TSE/RDS licensing role are not installed to prevent conflict with ServerLink services.

It is mandatory to use a fixed private IP address and a fixed public IP address. If your ISP (Internet Service Provider) did not provide you with a fixed public IP address, you need to subscribe to a free DNS account.

On Client side:

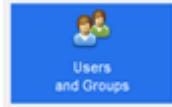
Microsoft workstation: Windows XP, W7 or W8 are supported. A PDF Reader (like FoxIt) and Java should be installed on the users PCs.**Macintosh workstation:** You can use any MAC RDP client, or ServerLink Java

and HTML5 clients.

Linux Workstation: You can use Linux Rdesktop RDP client or ServerLink Java and HTML5 clients.

Step 2 : Creating users.

After reboot, the ServerLink host is almost ready to go. So the first action will be to create users and the AdminTool will help you to do so.



Each user must have a logon AND a password.

Step 3 : Select the most suitable client for your needs.

ServerLink complies with Windows RDP protocol. So, any user can connect locally or remotely with a standard Remote Desktop Connection client (mstsc.exe) or any RDP compatible client. To fully benefit from the ServerLink advanced features (Seamless client, RemoteApp, Universal Printer...) you can use a ServerLink generated client or the ServerLink Web Portal.

ServerLink is a very flexible solution and offers multiple ways to open a session:

- Classic Remote Desktop Connection (MSTSC.EXE).
- Portable ServerLink RDP client which will display a Remote Desktop windows.
- ServerLink Seamless client which will only display applications and no desktop.
- MS RemoteAPP client which will display application using the native MS RemoteApp.
- Windows client over the ServerLink Web Portal.
- Java client over the ServerLink Web Portal.
- HTML5 client over the ServerLink Web Portal.

These clients give the user the following experience:

With Remote Desktop Connection (mstsc.exe)

- **Connection:** The connection is a very standard one. The Universal Printer is not supported in that type of connection.
- **Display:** Users will see their session within a Remote Desktop window. This desktop displays the content of the user's desktop folder. If the administrator has assigned specific applications with the AdminTool, only these applications will be displayed (no taskbar, no Desktop).

ServerLink RDP generated client.

This is a unique ServerLink solution; it empowers local and remote users to connect using one single dedicated program. It includes the connection program, the Universal Printing advanced feature, portability with high level of security while keeping it very simple for the users. So, it is much better than a classic Remote Desktop Connection.

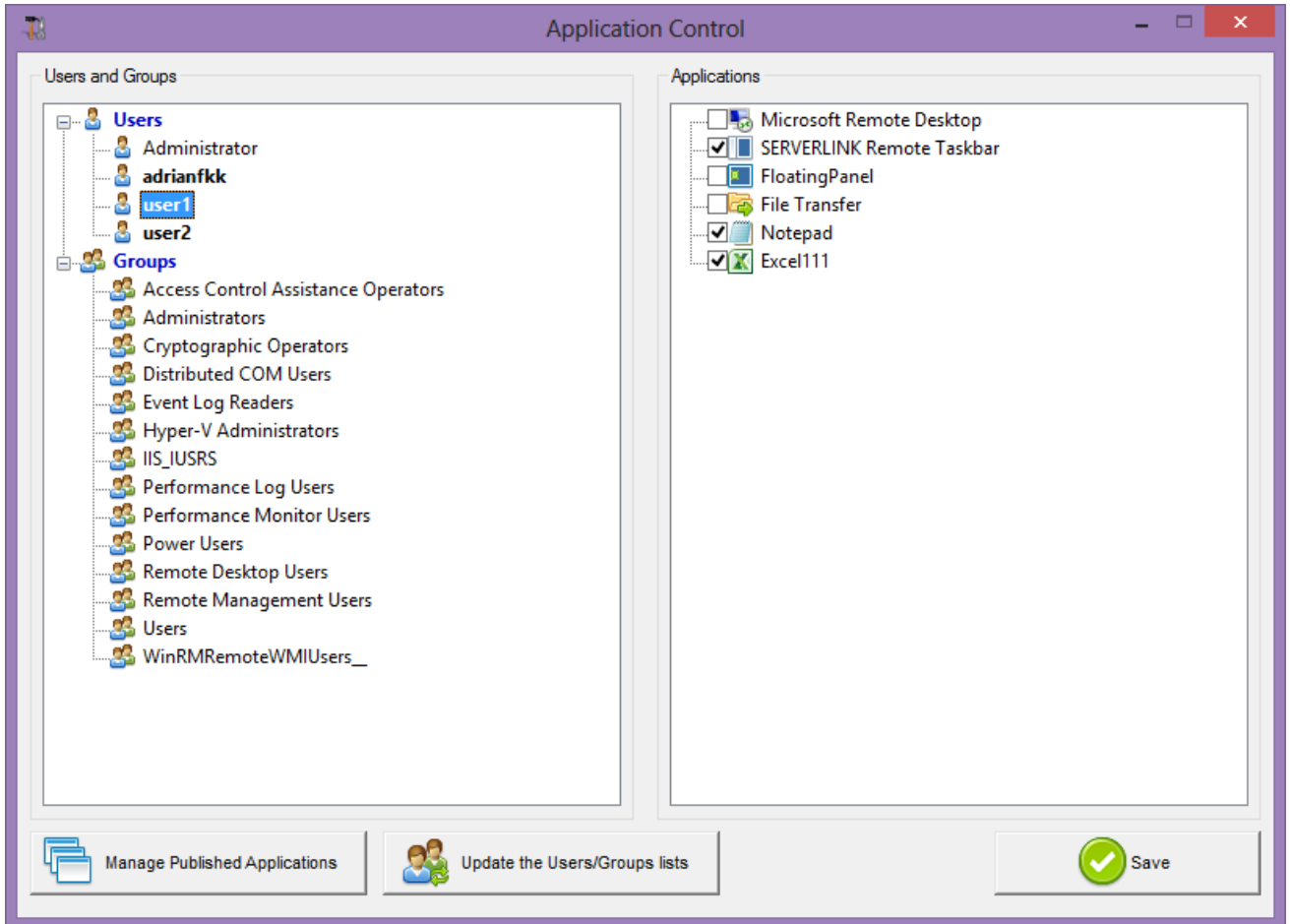
The ServerLink Seamless generated Client (or the RemoteApp one).

Remote applications will exactly look like any local application. Instead of a classical Remote Desktop window, you will be free to switch between your local and remote applications without having to minimize a Remote Desktop window. If your ServerLink host support the MS RemoteApp (W7 Enterprise/Ultimate, W8 Enterprise, W2008 or W2012) you can use this native alternative for the ServerLink Seamless technology.

Step 4 : Application publishing and Application Control.

One of ServerLink major benefit is the freedom to assign application to user(s) or to a group of users using the AdminTool.

- If you assign one application to a user, he will only see this application.
- You also can assign him the ServerLink Taskbar or the Floating to display multiple applications.
- You can of course decide to publish a full Remote Desktop if you want to.



In this example, the administrator has decided that the user “user1” will get the ServerLink Taskbar with 2 applications: Notepad and Excel111.

Please visit our support pages on our web site where you will find an on-line guide. For any question, please send an email to support@ServerLink.com.my