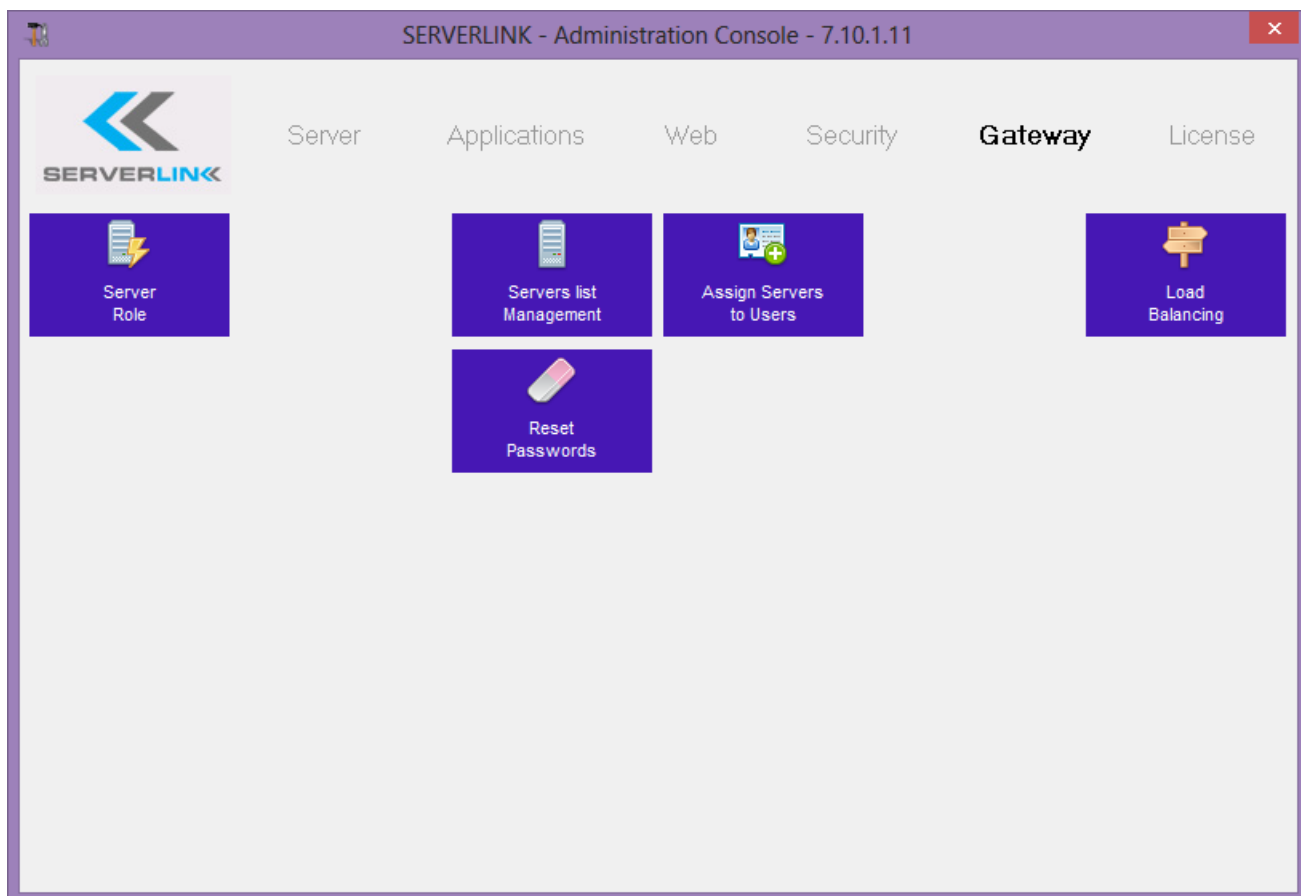


Managing Gateway Users

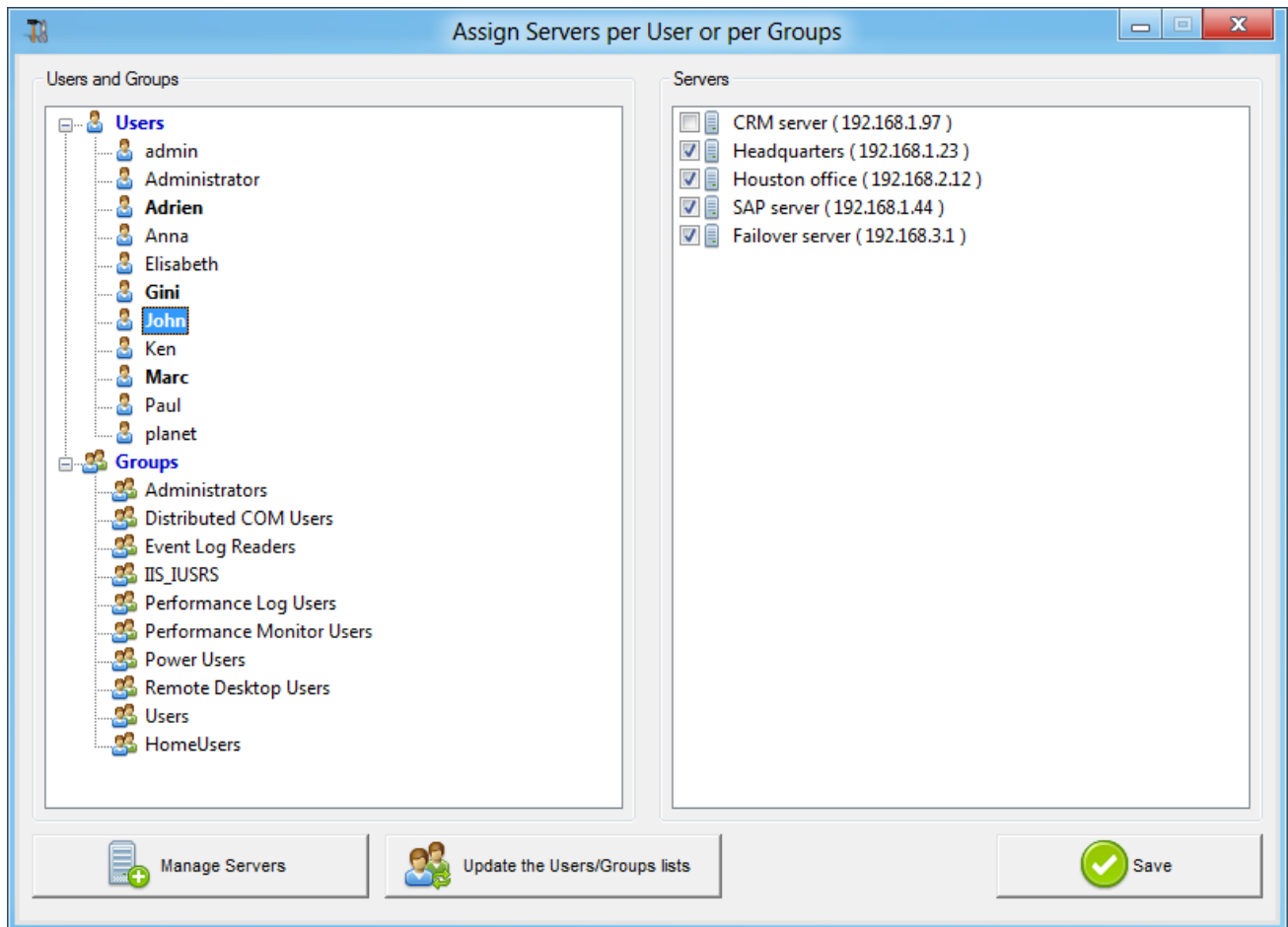
Gateway Tab

The Admin Tool Console enables you to configure ServerLink, including the Gateway in its own tab:



Managing the Users of the Gateway

To manage the users please click on the "Assign Servers to Users" button. The window "Assign Servers per User or per Groups" will open:

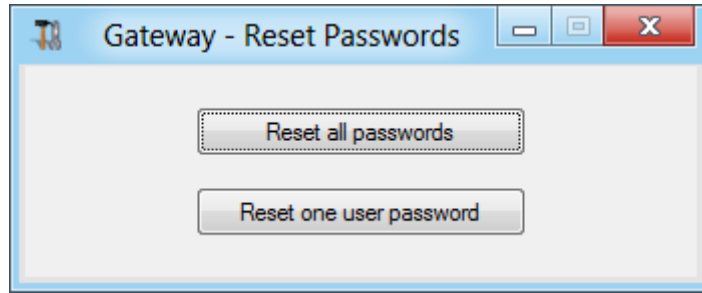


To assign a server to a user, simply click on the user in the "Users and Groups" list and then check the server's checkbox in the "Servers" list. To remove a server from a user, simply click on the user in the "Users and Groups" list and then uncheck the server's checkbox in the "Servers" list.

When everything is set up and you are ready to exit, please click on the "Save" button in order to apply your changes.

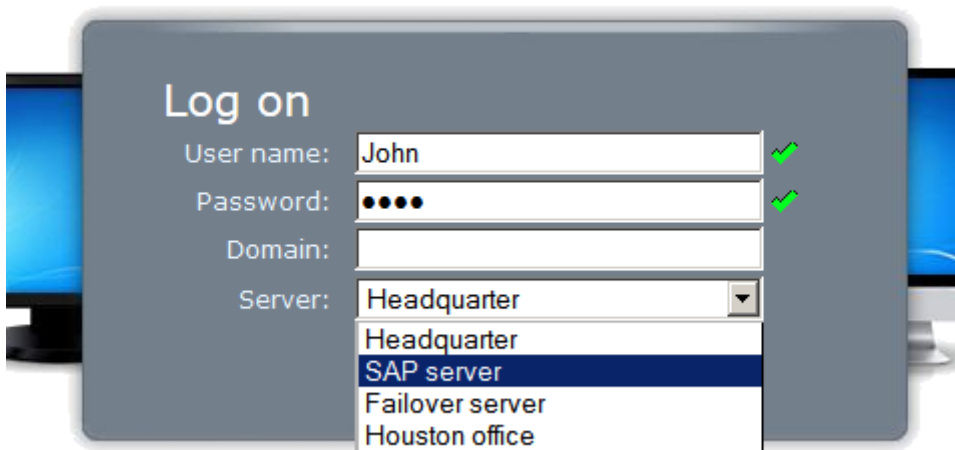
Notes

- The server must be added first to assign it to a user. To add a server, click on the "Manage Servers" button to open the Gateway Servers Management tool.
- The example above is for a Domain or a Workgroup.
- If you use a workgroup the users logins and passwords must be the same on each ServerLink server that you assign. You can use the "Reset Passwords" button in the "Gateway" tab of the AdminTool in order to reset the passwords when needed:

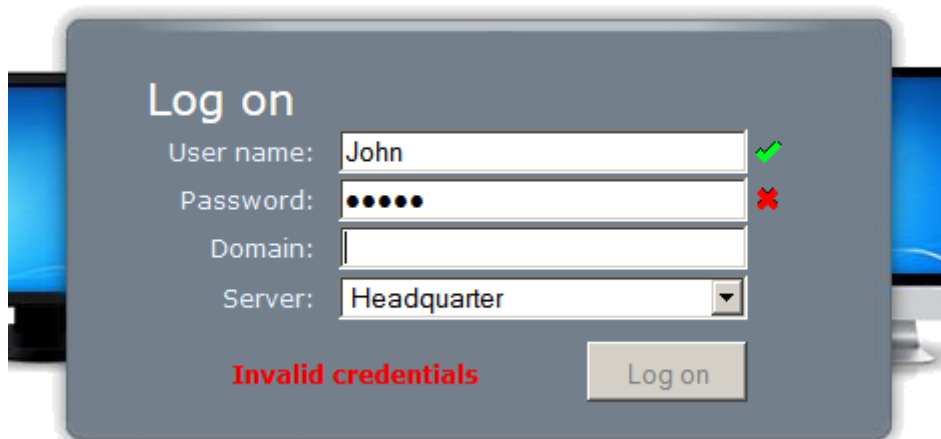


Example of what you will get when users will connect to the Gateway

John can select the server. He wants and he will get an auto-logout to this server:



If he types a wrong password, John will have to retype his password:



Marc has a different list of possible servers:

The screenshot shows a 'Log on' dialog box with the following fields and values:

- User name: Marc (with a green checkmark)
- Password: [masked with 4 dots] (with a green checkmark)
- Domain: [empty]
- Server: SAP server (with a dropdown menu showing 'SAP server' and 'CRM server' as options)

Someone tries to hack the Gateway. He does not see any server and the Gateway blocks his web access.

The screenshot shows a 'Log on' dialog box with the following fields and values:

- User name: hacker (with a red 'x' mark)
- Password: [masked with 8 dots] (with a red 'x' mark)
- Domain: [empty]
- Server: [empty]

Below the fields, the text 'Invalid credentials' is displayed in red. A 'Log on' button is visible at the bottom right.