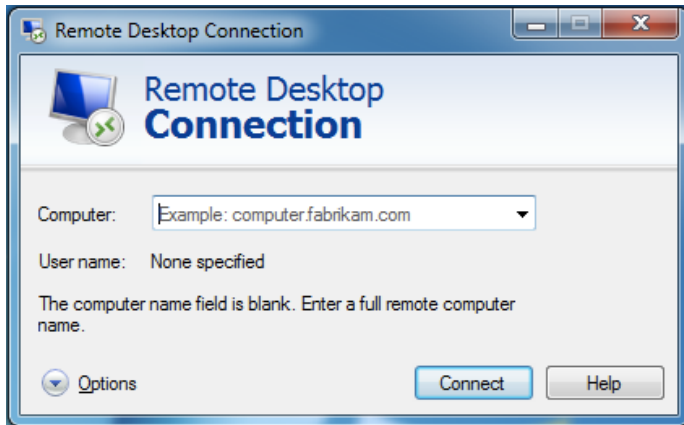


REMOTE USER REFERENCES

Remote Users are now connectable to HQ main pc for access application in server with any one of the following connection methods: -

1. REMOTE DESKTOP CONNECTION (Cannot Print to Local Printer via Universal Printer Driver)

Click Start (Windows Logo) → All Program → Accessories → Remote Desktop Connection

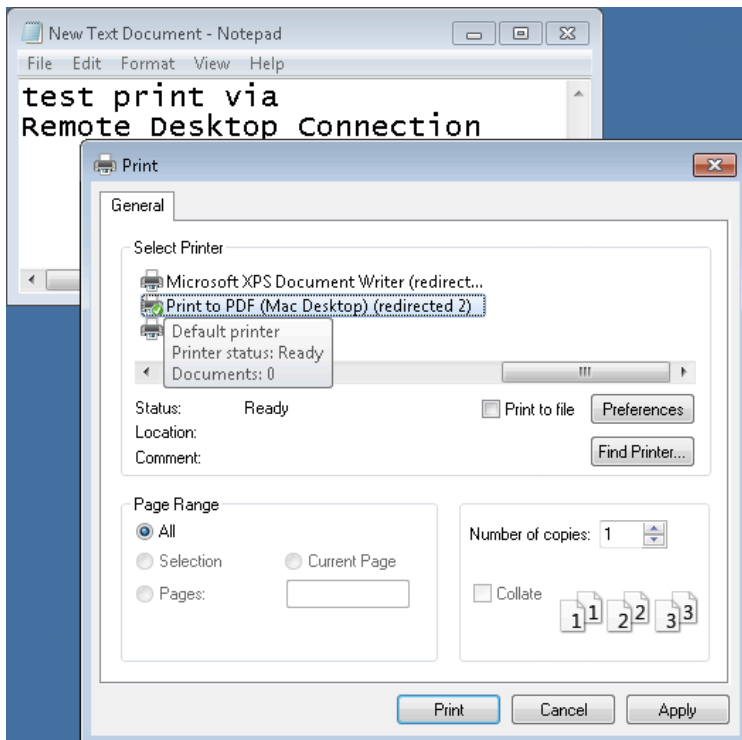


Key in the server's address in the column

With LAN connection, use Server Fixed LAN IP address

With Internet/WAN connection, use Dynamic Hostname

Computer: _____



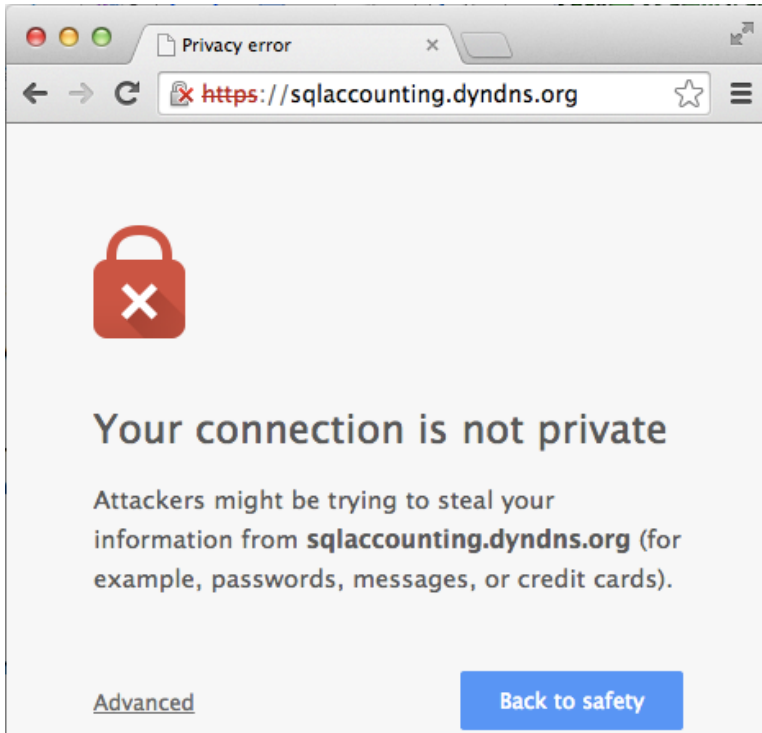
Print to Local Printer

Remote Users connected to Server over Internet/WAN connection will work as normal workstation of the server.

Remote Users can print to local printer if the "Local Printer" is REDIRECTED to server and found the local printer driver "Redirected" in the Server's Printer folder.

Example: Epson LQ2180 (redirected 2)

2. WEB BROWSER CONNECTION (Print to Local Printer via Universal Printer Driver)
Open any Internet Browser (preferred Google Chrome)

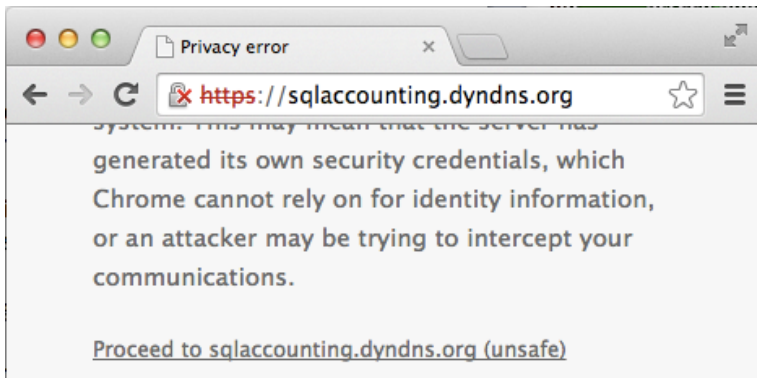


On the URL address bar, key in the server address.

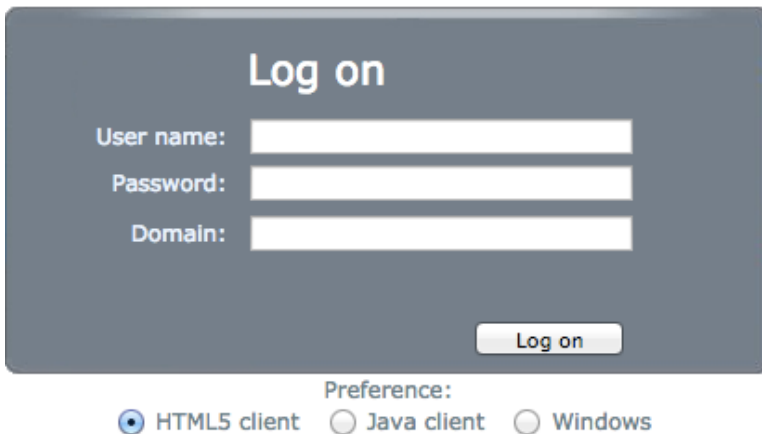
With LAN connection, use Server Fixed LAN IP address

With Internet/WAN connection, use Dynamic Hostname

Click on Advanced to continue



Click on the "Proceed to abc.dyndns.org (unsafe)"

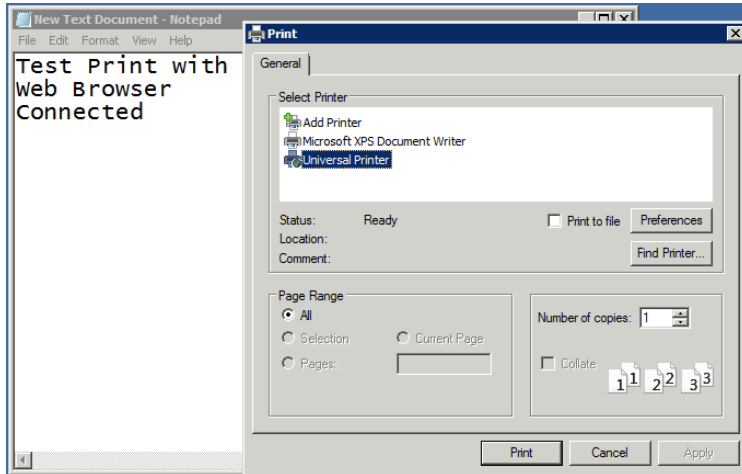


Fill in the Windows Username and Password provided by Administrator

If there is no domain, leave it blank otherwise fill in the Domain name.

Click Login

And work as normal workstation to the server.



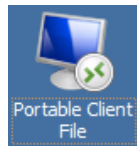
Print to Local Printer

Connection with Web Browser is able to print document to local printer.

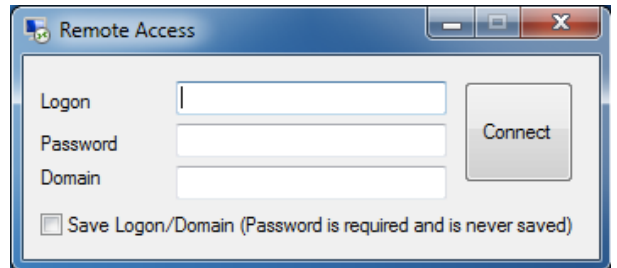
Remote Users can print to local printer by select UNIVERSAL PRINTER. The document will pop on another tab of the Web Browser as PDF. You may save to local Harddisk or print to local printer.

Action complete - click to view PDF

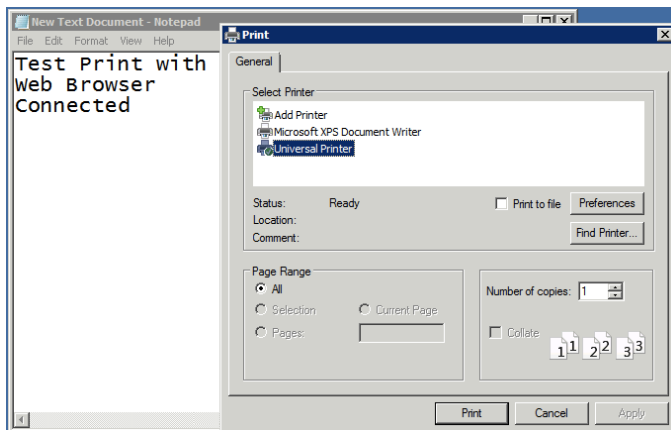
3. PORTABLE CLIENT FILE (Print to Local Printer via Universal Printer Driver)



Launch this Portable Client File provided by Server Administrator,



Remote Access login menu appear, fill in the Windows Username & Password. Domain name if needed otherwise leave it blank.



Print to Local Printer

Open any application and print as normal. On printer selection, choice UNIVERSAL PRINTER. In less than a minute, a local PC printer folder will pop up for you to choice which of the local printer you wish to print out the document.

Other Remarks
